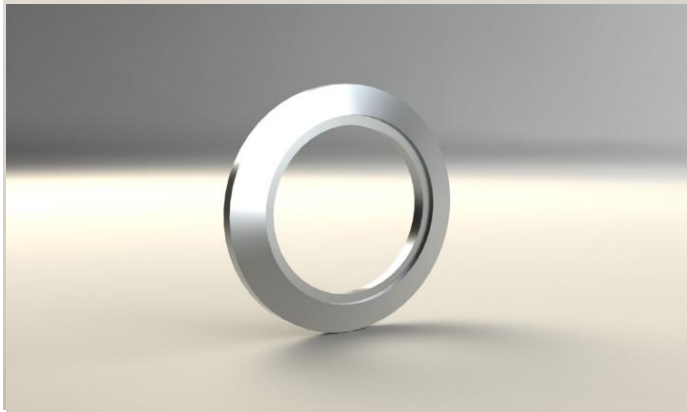


ITL Part Code - KF40B41

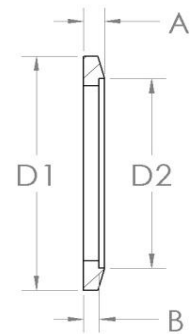


Specification

Material: 304L Stainless Steel

Special bores available on request.

A	B	D1	D2
4.4 (0.17)	3.3 (0.13)	55 (2.17)	44.5 (1.75)



Specialist UK manufacturers and suppliers of standard and bespoke vacuum products.
For all enquiries please contact us on: