

ITL Part Code - ISO80B89

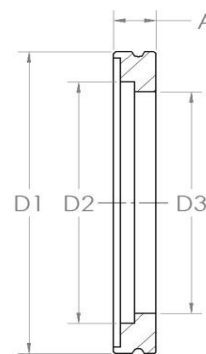


Specification

Material: 304L Stainless Steel

Imperial tube and special bores available on request.
 ISO320B324 has a counter bored from vacuum side,
 D3 = C-ring dimension.

A	D1	D2	D3
12 (0.47)	110 (4.33)	89 (3.50)	83 (3.27)



Specialist UK manufacturers and suppliers of standard and bespoke vacuum products.
For all enquiries please contact us on: