

ITL Part Code - ISO100B108

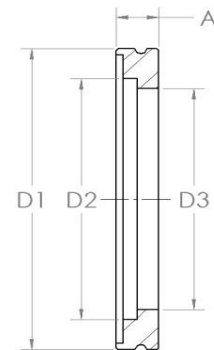


Specification

Material: 304L Stainless Steel

Imperial tube and special bores available on request.
ISO320B324 has a counter bored from vacuum side,
D3 = C-ring dimension.

A	D1	D2	D3
12 (0.47)	130 (5.12)	108 (4.25)	102 (4.02)



Specialist UK manufacturers and suppliers of standard and bespoke vacuum products.
For all enquiries please contact us on: