

ITL Part Code - ISO500B508

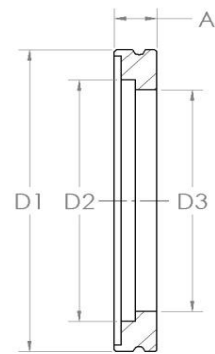


Specification

Material: 304L Stainless Steel

Imperial tube and special bores available on request.
 ISO320B324 has a counter bored from vacuum side,
 D3 = C-ring dimension.

A	D1	D2	D3
17 (0.67)	550 (21.65)	508 (20.00)	501 (19.72)



Specialist UK manufacturers and suppliers of standard and bespoke vacuum products.
For all enquiries please contact us on: