

ITL Part Code - ISO160TU

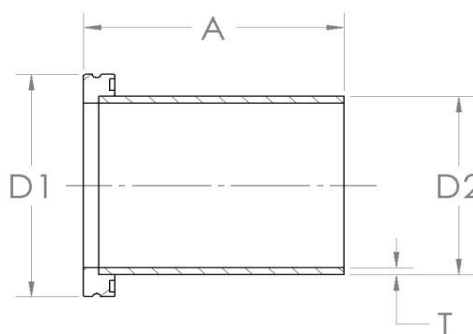


Specification:

Material: 304L Stainless Steel

Special lengths available on request.

A	D1	D2	T
100 (3.94)	180 (7.09)	159 (6.26)	3.0 (0.12)



Specialist UK manufacturers and suppliers of standard and bespoke vacuum products.
For all enquiries please contact us on: